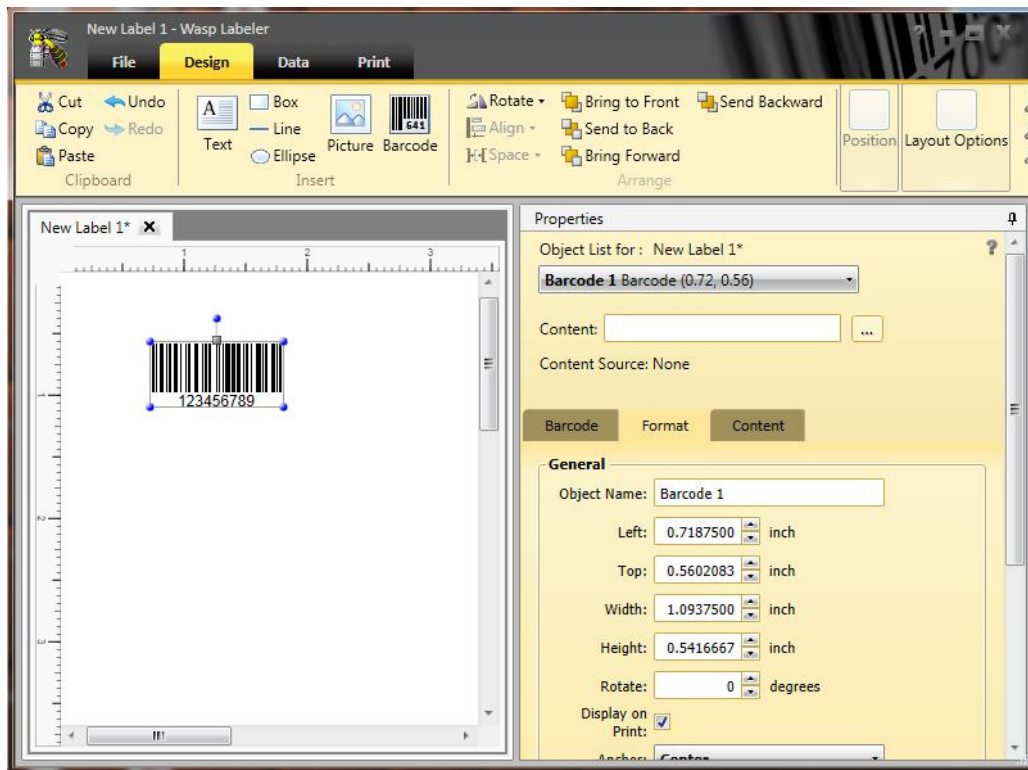

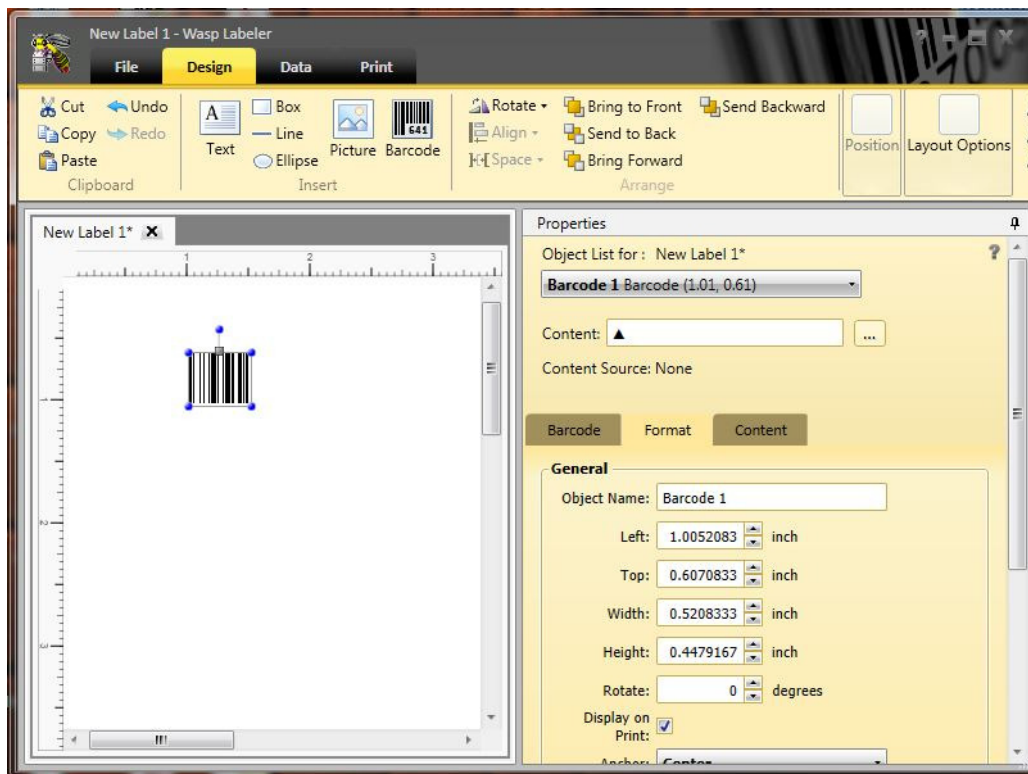


WWS450 Show\ Hide Keyboard Barcode Tutorial For Labeler v7

1. From the Design tab add a code 128 barcode object.



2. Change the Content Properties of the barcode to <RS>. Delete the default Content and click the ellipsis button  to the right of the Content field and select <RS>



3. Go to the Print tab. The barcode is ready for printing.

