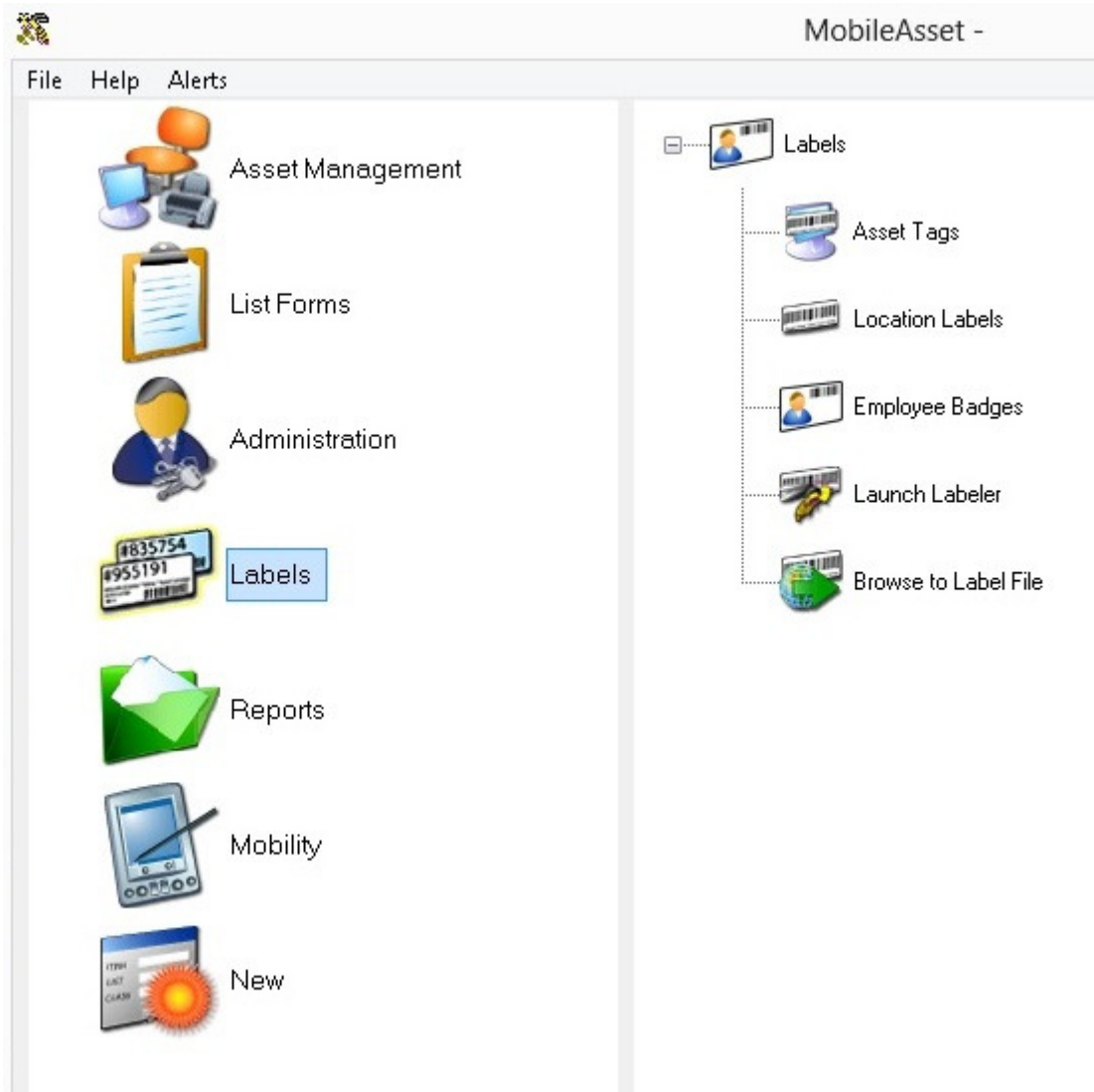
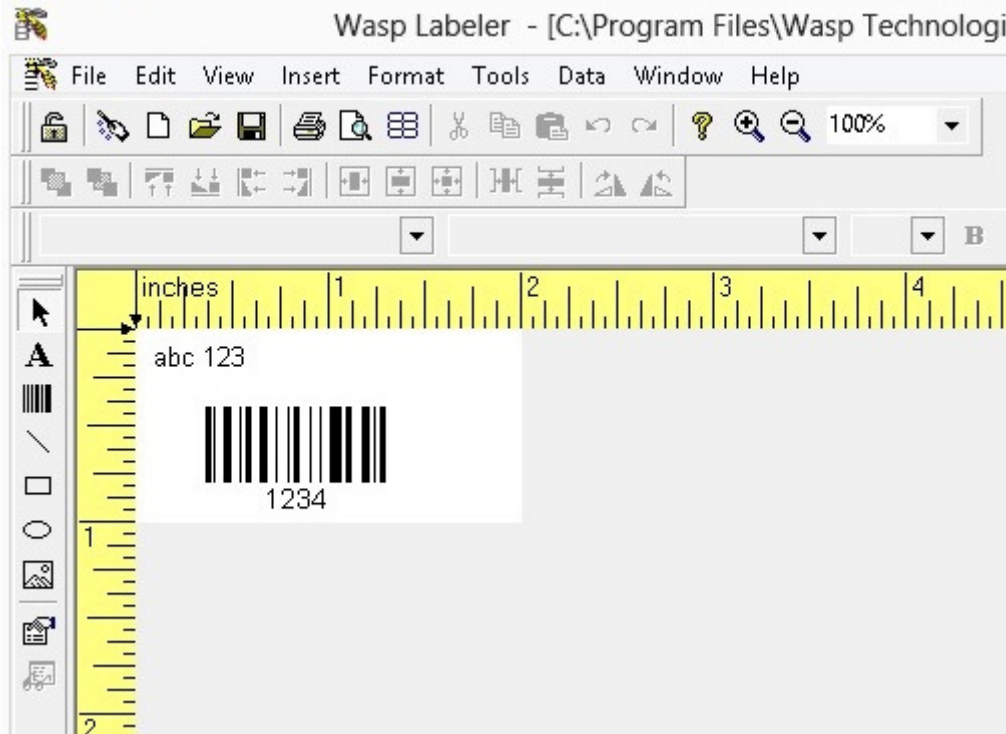


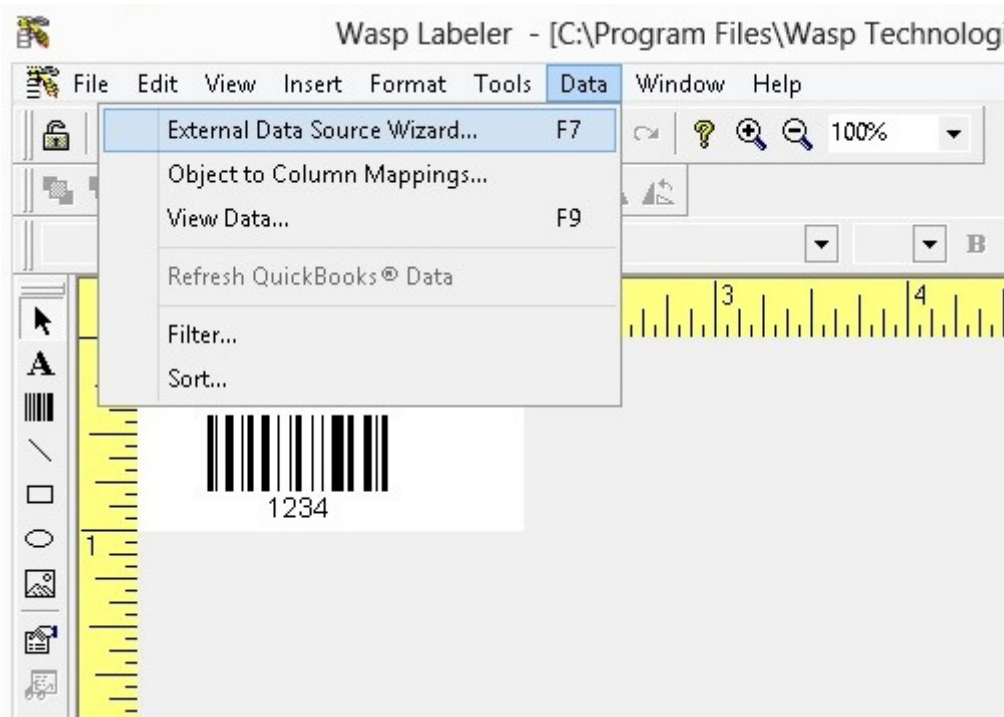
To start click on the **Labels** icon on the Main screen in Mobile Asset. From there you will see a list of labels that Mobile Asset uses that you can modify. For this example we will select Asset Tags as shown below.



Once we select Asset Tags the Labeler software will start up and load the label as shown below.



From here we need to start the **External Data Source Wizard** as shown below.

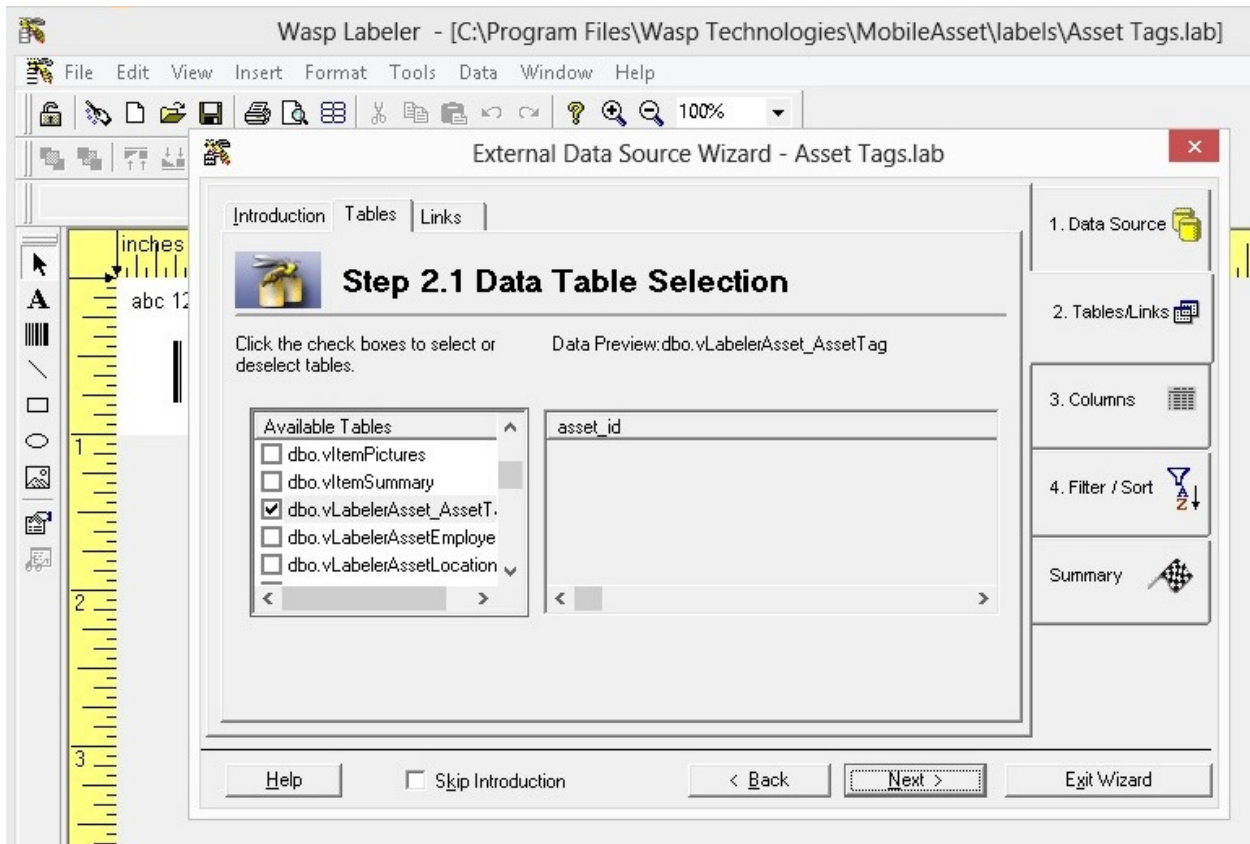


You will now see the beginning of the External Data Source Wizard. From here you click on **Next** and it will log in automatically to the Mobile Asset database. If you get a SQL error which prompts you for login information use the following:

Login ID: AssetReader

Password: ReadOnly@1

At this point you will now see Step 1. Data Source Selection. From here click on **Next** and you will advance to the Table Selection and Link Creation screen which you will click on **Next**. Now you will be at Step 2.1 Data Table Selection as shown below.

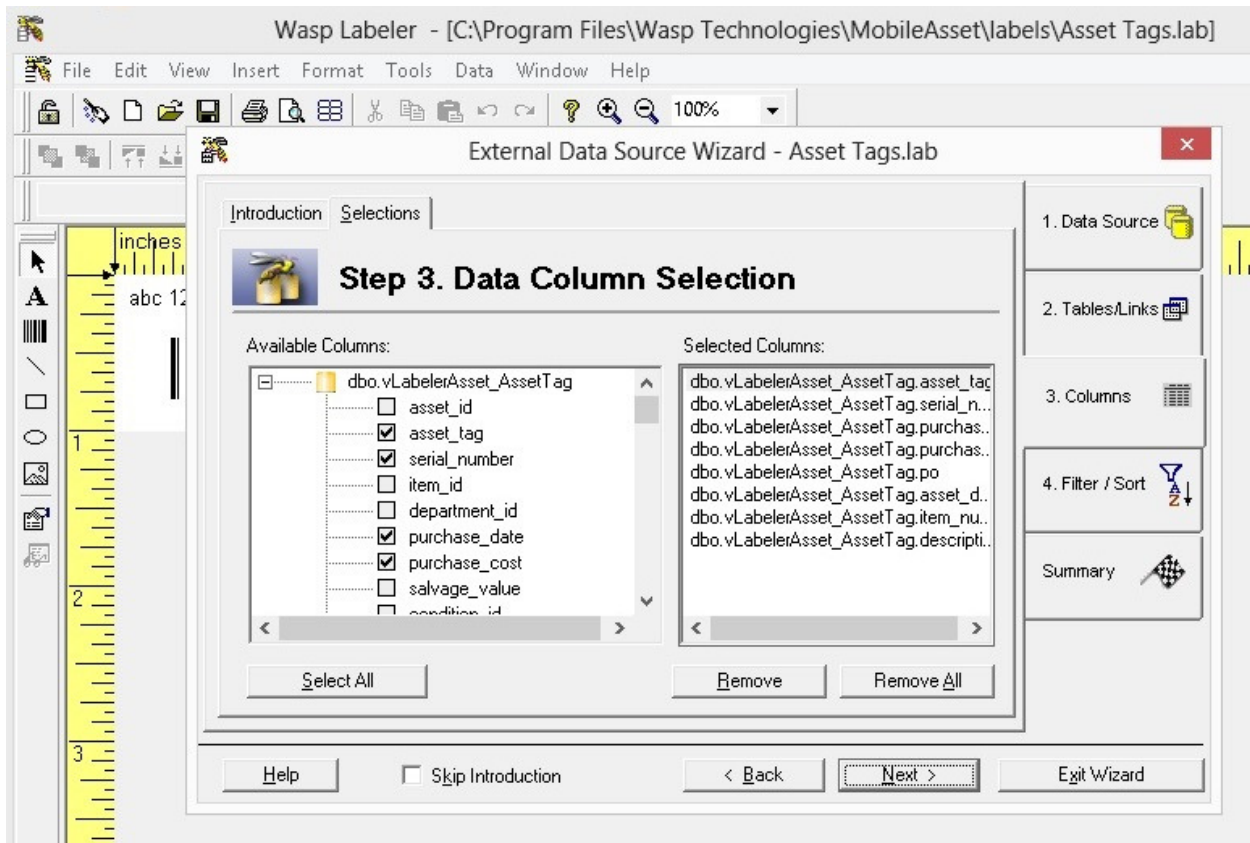


The Data Table Selection screen will show you all the data tables that Mobile Asset uses. This label uses the dbo.vLabelerAsset_AssetTag table which is selected by default.

NOTE: Although it is possible to select other data tables, Wasp Technical Support will only handle support questions concerning the default table that is used by Mobile Asset for the label in question. If you are unable to create a label on your own using the other data tables, Wasp Sales Dept. offers a fee based service to have our programmers create a label for you from any of the data tables that are available.

For this example we will only use the default data table which will already be selected so click **Next** on this screen.

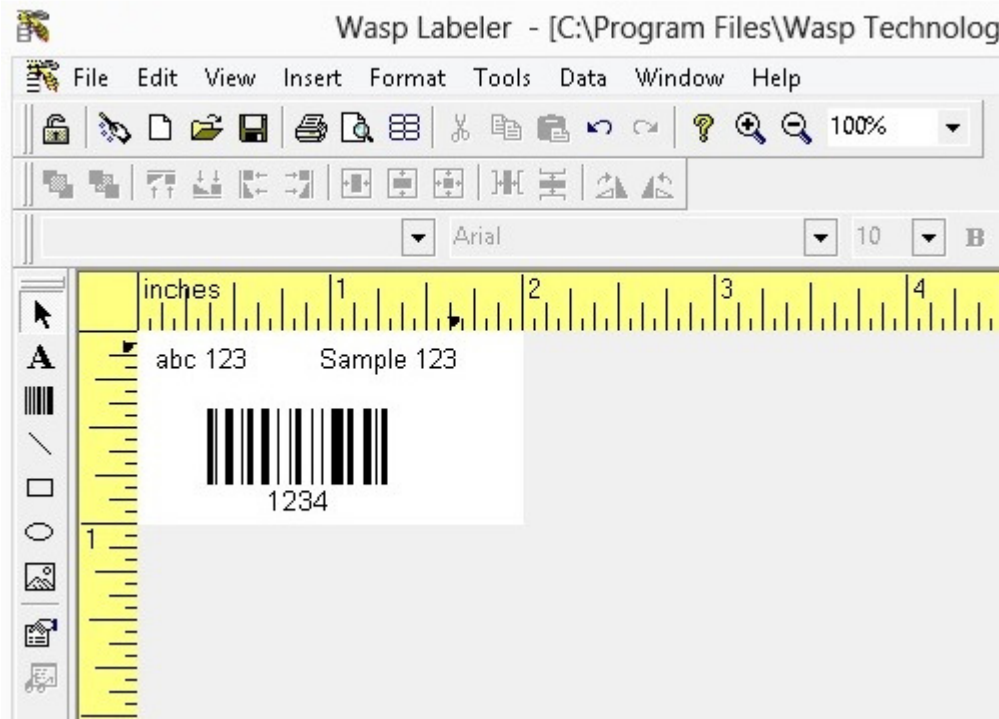
You should now be at Step 3. Data Column Selection as shown below.



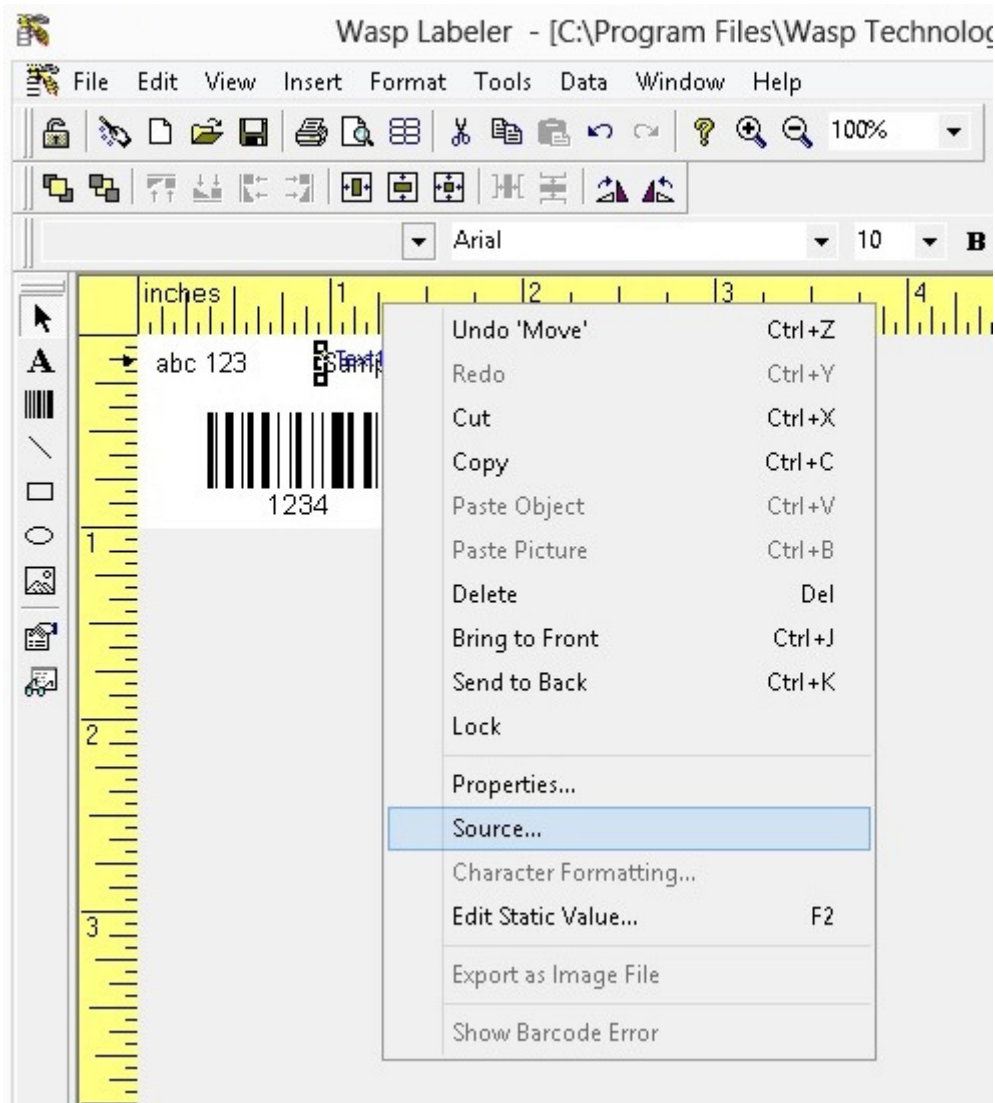
From here you will see all the data fields available for the table. The label we selected only uses the description and asset tag fields. Many other fields are also selected even though they are not used so we will go ahead and use the serial number with the label. You can select any other data fields also if needed so they are available to be selected later when we formally add it to the label. After selecting the data fields we want click on **Next**.

We will now be on the Filter and Sort Criteria Creation screen which we will just click **Next** on. Click **Next** on the On the Step 4.1 Filter Criteria Creation screen. Click **Next** also on the Step 4.2 Sort Criteria Creation. On the Configuration Summary screen click **Exit Wizard**.

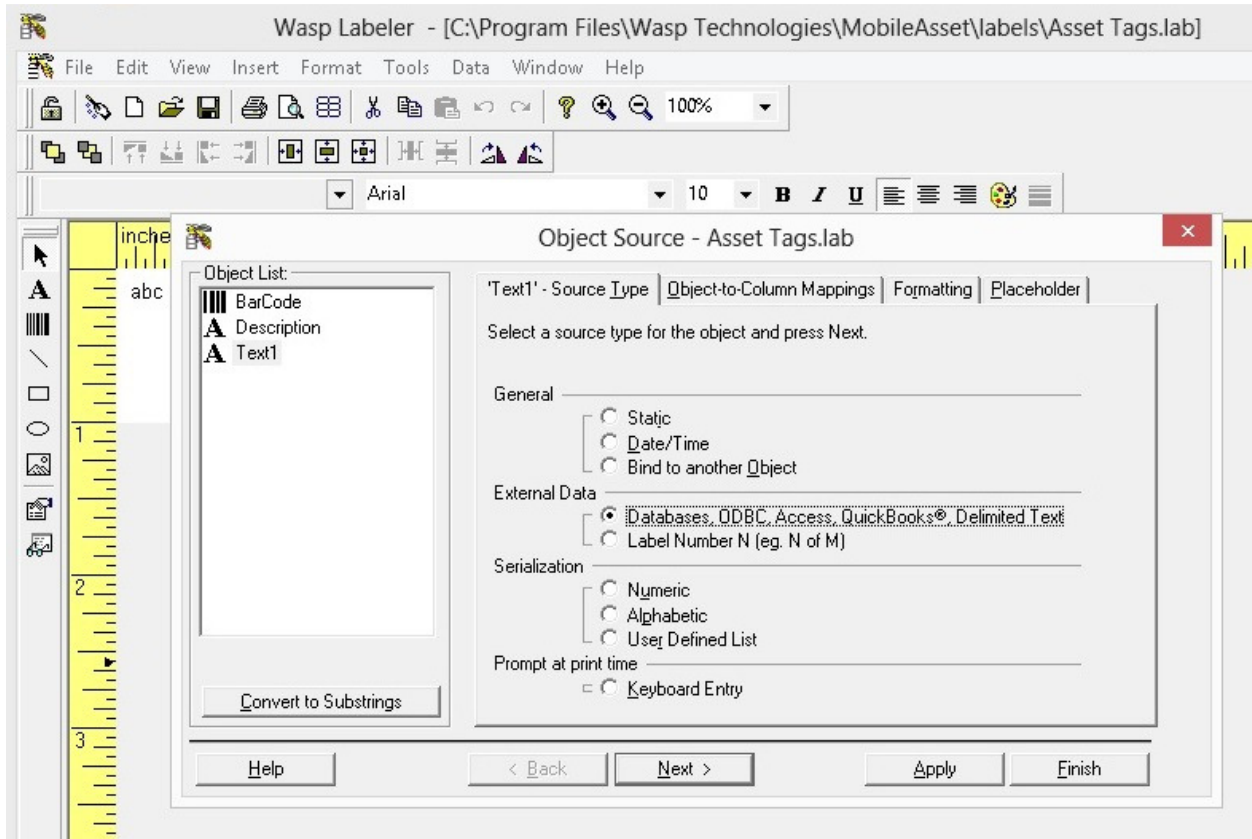
Now we must add a text field to show the serial number field that we talked about earlier. To add a text field go to icons on the far left area and click on the uppercase bold A and then click on the area of the label that you want to place it at. Once its placed you will get several small windows that will pop up which you can safely close. After that you should have the text field with its default text (Sample 123) on the label as shown below.



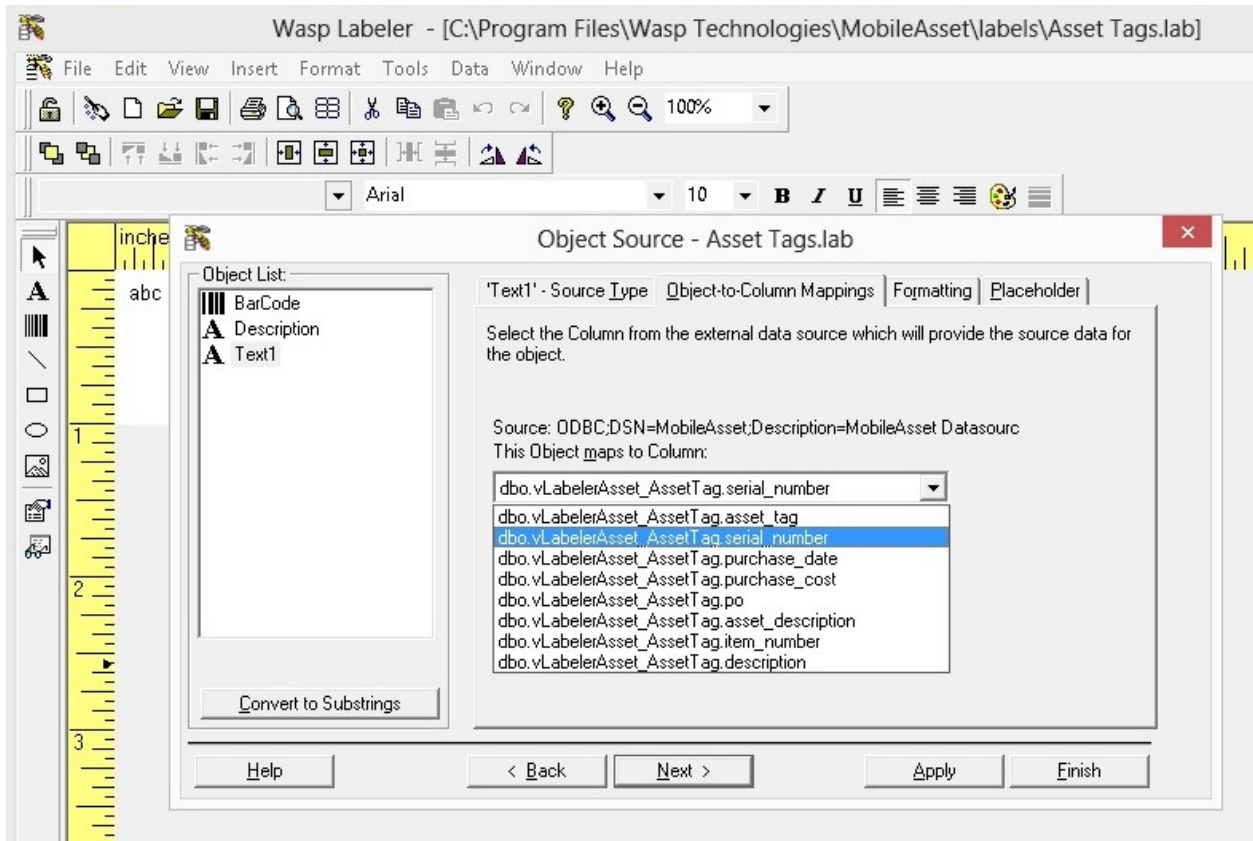
Right click on the text field (as shown below) and click on Source.



You will now see the Object Source window as shown below. Under **External Data** click on the **Databases,ODBC,Access,Quickbooks,Delimited Text** option and then click on **Next**.



You will now be at the point to specifically select the data field that you want from the ones that were checked earlier. For this example we will click on **dbo.vLabelerAsset_AssetTag.serial_number** as shown below and click **Next**.



The next screen will prompt for a Format String which is not needed so click Next. After that you will be prompted for a Placeholder which you can enter to change the default view of your text field from 'Text1:dbo.vLabelerAsset_AssetTag.serial_number' as shown in the picture on the next page to something simpler such as *Serial Number*. For this example we will not set a placeholder since it is optional so when finished with this screen click **Next**.

You will now have the text field you added ready to pull the serial number data from the database when you print tags from within Mobile Asset.

